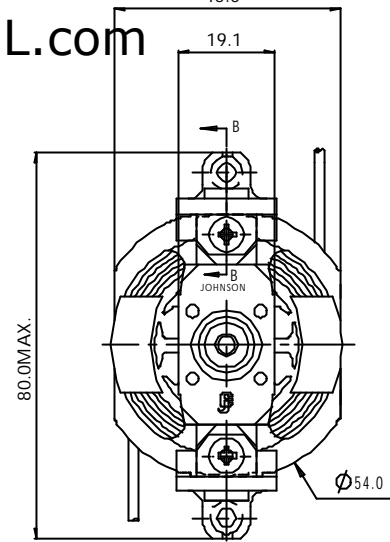
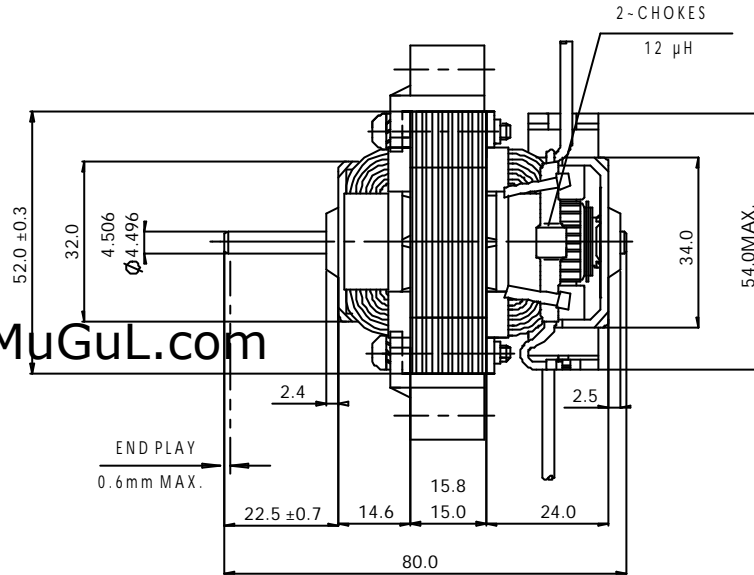
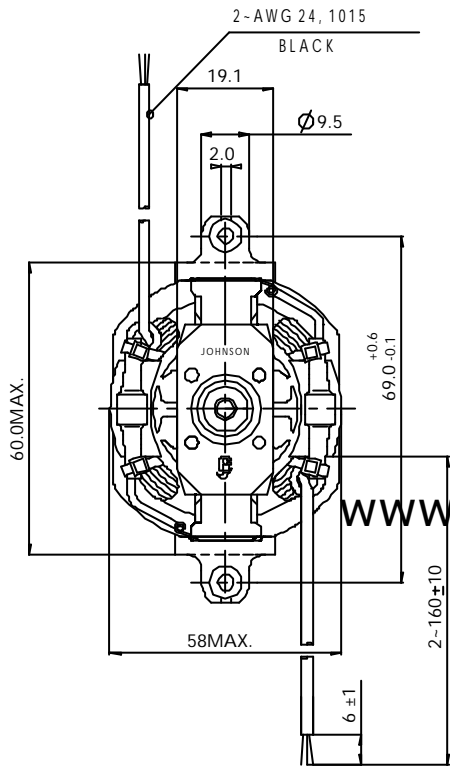
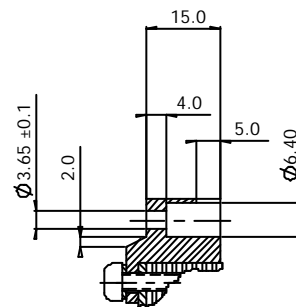
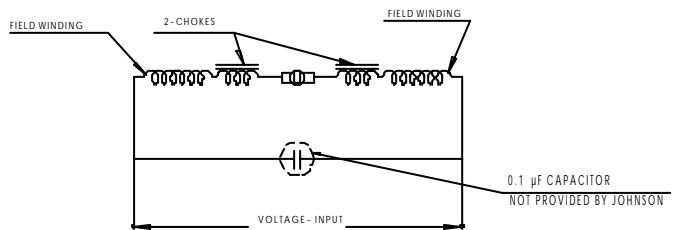


www.MuGuL.com

ROTATION



www.MuGuL.com



SECT. B-B

www.MuGuL.com U-5415

JOHNSON ELECTRIC GROUP COMPANY  
 The drawings accompanying this motor are for information only and are not to be used for any other purpose without the written consent of Johnson Electric Group Company. The drawings are the property of Johnson Electric Group Company and shall remain the property of Johnson Electric Group Company. All rights reserved.

ASE11302211 UPDATED		1:G.O	02/05/21
REV	BY	DATE	
01	KTW	01/10/20	
02	KTW	01/02/05	
ALT. REF.	DESCRIPTION	BY	DATE
MATERIAL	FINISH	TOLERANCES	
		DEC. PLACES: 0.2	A3
		DEC. PLACES: 0.10	
		DEC. PLACES: 0.05	
		ANGULAR ± 2'	
TITLE	ID : 503052000001	SCALE	1:1
		DWN. BY	KTW
		CHK. BY	
		APP. BY	
		DWG. NO.	E15260
JOHNSON ELECTRIC ENGINEERING LTD. A JOHNSON ELECTRIC GROUP COMPANY. JOHNSON BUILDING, TAI PO, HONGKONG.			

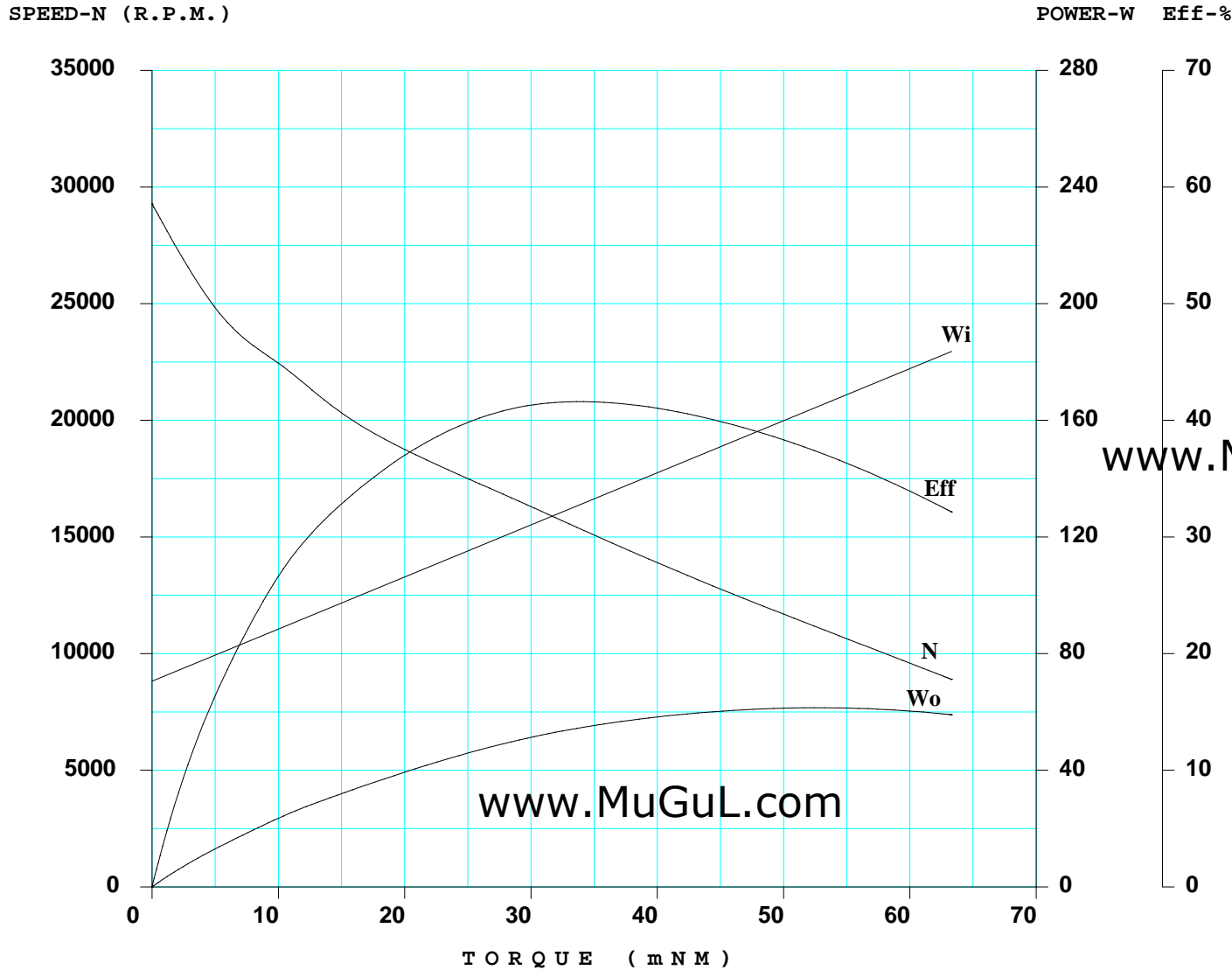
# JOHNSON ELECTRIC ENGINEERING LTD

MOTOR MODEL : U-5415 CODE NO. : \_\_\_\_\_

REFERENCE NO. : CE15416A DATE : 2000/01/26

www.MuGuL.com

TITLE : Torque/Speed Characteristics



SUPPLY		
VOLTAGE	V	230
FREQUENCY	HZ	50
NO LOAD		
SPEED	RPM	29275
CURRENT	AMP	0.273
AT STALL		
TORQUE	mNM	-
CURRENT	AMP	-
AT MAXIMUM EFFICIENCY		
EFFICIENCY	%	41
SPEED	RPM	15211
TORQUE	mNM	34.0
CURRENT	AMP	0.61
AT MAXIMUM POWER		
SPEED	RPM	10897
TORQUE	mNM	54.0
CURRENT	AMP	0.77
OUTPUT	W	60.7
CHARACTERISTICS		
TOR.CONST.	mNM/AMP	-
EMF CONST.	MV/RAD/SEC	-
DYNAMIC 'R'	OHM	-
REGULATION	RPM/mNM	-

NOTES: THE CURVE REPRESENTS THE PERFORMANCE OF THE SAMPLE ONLY. PERFORMANCE SPECIFICATION FOR MASS PRODUCTION WILL BE ESTABLISHED AT PREPRODUCTION PILOT RUN