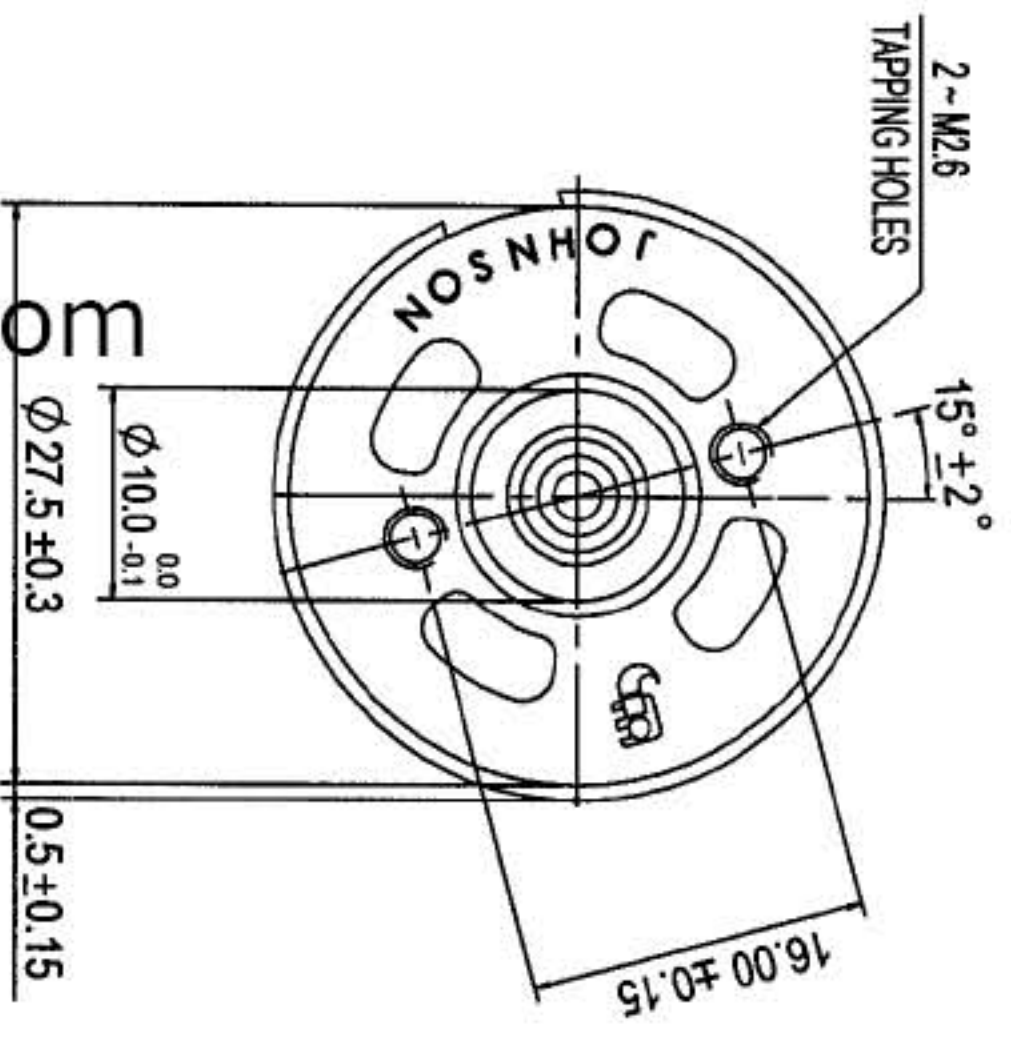
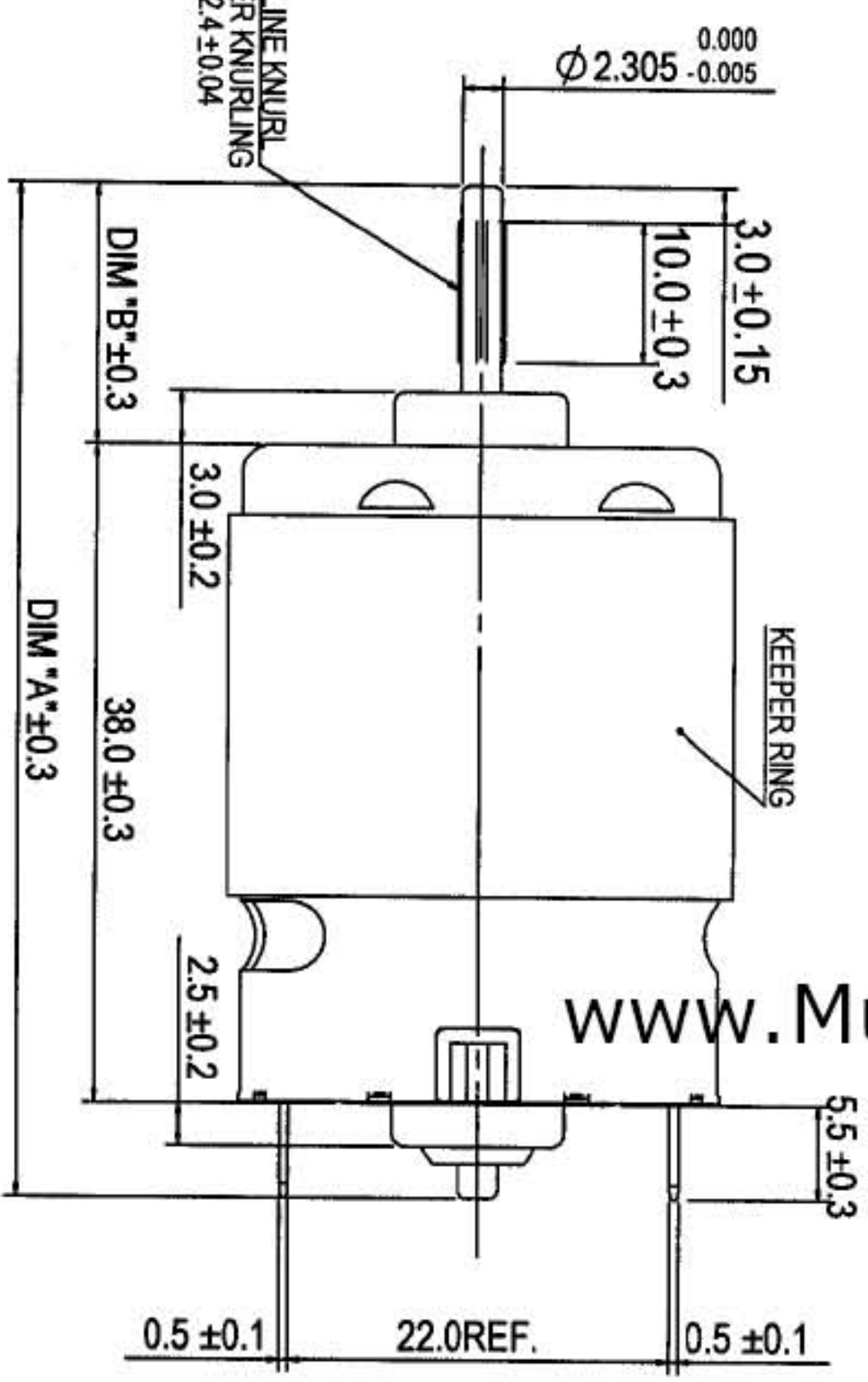
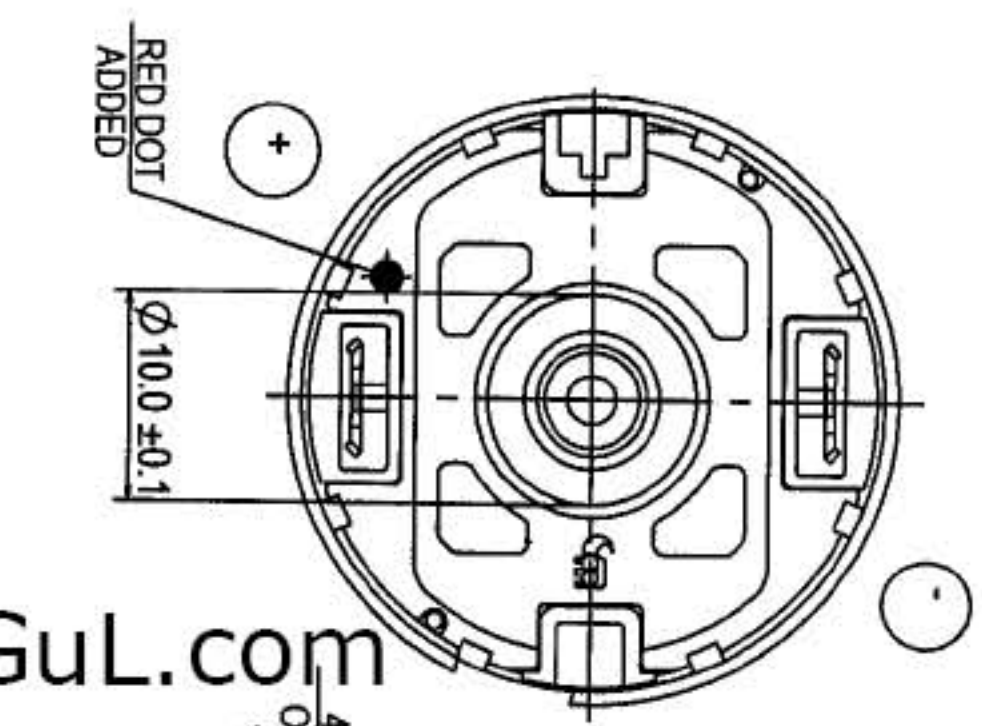
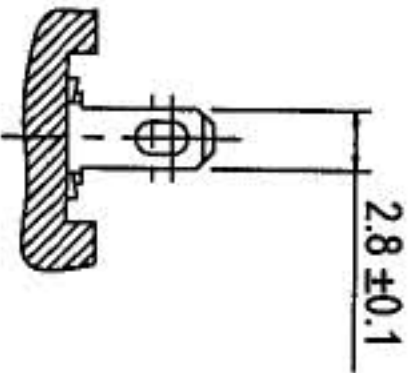


ALT.	REF.	DESCRIPTION	DATE	BY
A		Initial release	20050727	CY XIA



www.MuGuL.com

www.MuGuL.com

www.MuGuL.com

NOTES:-

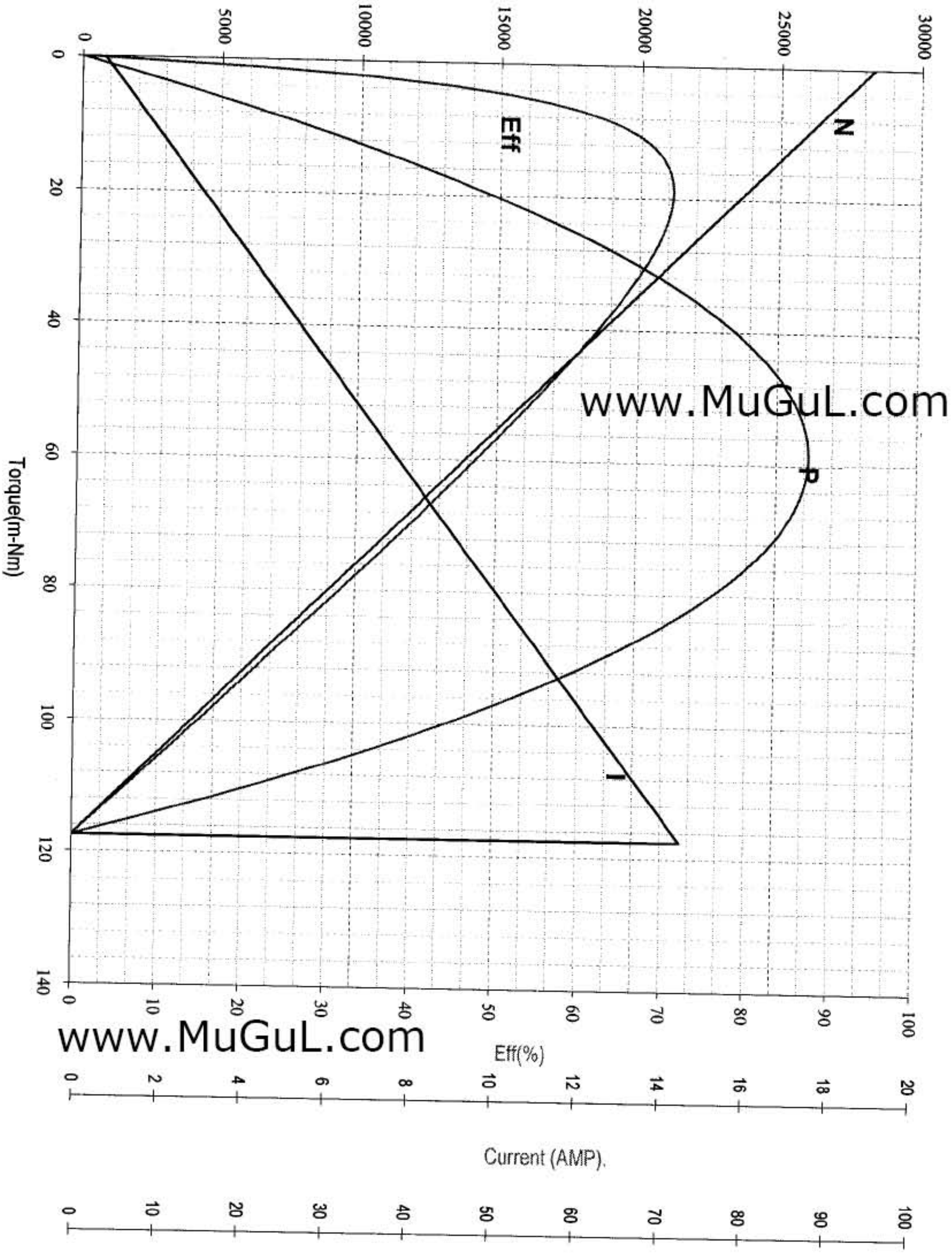
1. LENGTH OF SHAFT, DIM. "A" 62.0 mm.
2. FRONT EXTENSION, DIM. "B" 20.0 mm, MEASURED WITH SHAFT PUSHED AGAINST METAL END CAP.
3. DIRECTION OF ROTATION: ANTI-CLOCKWISE WHEN VIEWING MOTOR OUTPUT END WITH POSITIVE VOLTAGE APPLIED TO POSITIVE TERMINAL.
4. END PLAY: 0.50 mm. MAX.
5. MAX. MALE SCREW LENGTH ENGAGED INTO MOTOR HSG. IS 1.8 mm.

Cpk	Key Product	Customer Significant
> 1.67	⊙	□
> 1.33	⊙	□
> 1.00	⊙	□
Not Required	⊙	□

DWN. BY	CY XIA	CHK. BY	YKLA	APR. BY	ALSLA
Date (YYYYMMDD)	20050601	Date (YYYYMMDD)	20050801	Date (YYYYMMDD)	20050801
MATERIAL:		FINISH:			
General Tolerance		ISO 2768-1 Class m (Unless specified)			
<p>JOHNSON ELECTRIC JOHNSON ELECTRIC GROUP OF COMPANIES <small>This document is the Property of Johnson Electric and the information therein contained is confidential. Unauthorised reproduction or other use thereof, whether directly or indirectly, in whole or in part, is strictly prohibited. All products made or otherwise derived directly or indirectly from this document are proprietary to Johnson Electric. © Copyright Johnson Electric S. A. 2005. All rights reserved.</small></p>					
TITLE			SCALE		
MOTOR OUTLINE (HC385MG)			1.5:1		
DWG No.			A4		
05E3092-999-01			SHEET 1 OF 1		

SOF NO : 15/0003 (87028)
Project No.: 05E3092

Date : 05-10-27



Performance (In an ambient temperature of 25 -30 C)
Motor tested rapidly to prevent significant temperature rise.

At a constant voltage of **24.00** Volts
With a circuit resistance **0.000** Ohms

At No Load
Speed : **28329** Rpm
Current: **0.538** Amp

At stall (Extrapolated)
Torque : **117.496** m-Nm
Current: **14.469** Amp

At maximum efficiency
Efficiency : **70.58 %**
Torque : **18.989** m-Nm
Speed : **23751** Rpm
Current : **2.789** Amp
Output : **47.248** Watts

At maximum power
Torque : **58.748** m-Nm
Speed : **14165** Rpm
Current : **7.503** Amp
Output : **87.176** Watts

Characteristics
Torque Constant : **8.434** m-Nm/Amp
E.M.F Constant : **8.434** mV/rad/sec
Dy. Resistance : **1.659** Ohms
Motor Regulation: **241.106** Rpm/m-Nm
At Torque Level:

Torque: **m-Nm**

COMPUTER PRINT-OUT NOMINAL MOTOR CURVES.
Performance and characteristics are measured based on limited motor samples only.