

15W

INDUCTION MOTOR, REVERSIBLE MOTOR
 70mm TERMINAL BOX TYPE

INDUCTION MOTOR - CONTINUOUS RATING

SIZE mm sq.	Type	Poles	Output (W)	Voltage (V)	Frequency (Hz)	Duty	Rated Load				Starting Torque		Capacitor (uF)
							Current (A)	Speed (rpm)	Torque (kg-cm) (N-m)		(kg-cm)	(N-m)	
70	S7I15GA-T	4	15	1 ∅ 110	60	Cont.	0.34	1600	1.00	0.100	1.10	0.110	5.0
	S7I15GB-T	4	15	1 ∅ 220	60	Cont.	0.19	1550	1.10	0.110	1.10	0.110	1.2
	S7I15GC-T	4	15	1 ∅ 100	50	Cont.	0.35	1250	1.20	0.120	0.90	0.090	5.0
					60		0.34	1550	1.00	0.100			
	S7I15GD-T	4	15	1 ∅ 200	50	Cont.	0.19	1200	1.25	0.125	0.90	0.090	1.2
					60		0.18	1500	1.20	0.120			
	S7I15GX-T	4	15	1 ∅ 220	50	Cont.	0.16	1200	1.25	0.125	0.75	0.075	0.9
				S7I15GX-TCE									

- "CE" marked at the end of the model name indicates that it is thermally protected type which has received CE marking (File NO. E9766002E01, Certificate Institute: TÜV Rheinland) with built-in TP.
- "TP" marked at the end of the model name indicates that it is standard motor with Thermal Protector mounted. S7I15GX-T is thermally protected type with TP mounted.
- There is no marked the 'L' code for it is an exclusive use.

REVERSIBLE MOTOR - 30MINUTES RATING

SIZE mm sq.	Type	Poles	Output (W)	Voltage (V)	Frequency (Hz)	Duty	Rated Load				Starting Torque		Capacitor (uF)			
							Current (A)	Speed (rpm)	Torque (kg-cm) (N-m)		(kg-cm)	(N-m)				
70	S7R15GA-T	4	15	1 ∅ 110	60	30min.	0.44	1550	1.0	0.100	1.10	0.110	6.0			
	S7R15GA-T(TP)															
	S7R15GA-TCE															
	S7R15GB-T	4	15	1 ∅ 220	60	30min.	0.22	1550	1.0	0.100	1.10	0.110	1.5			
	S7R15GB-T(TP)															
	S7R15GB-TCE															
	S7R15GC-T	4	15	1 ∅ 100	50	30min.	0.42	1200	1.25	0.125	0.90	0.090	6.0			
	S7R15GC-T(TP)				60									1500	1.0	0.100
	S7R15GC-TCE															
	S7R15GD-T	4	15	1 ∅ 200	50	30min.	0.21	1200	1.25	0.125	0.90	0.090	1.5			
	S7R15GD-T(TP)				60									1500	1.0	0.100
	S7R15GD-TCE															
S7R15GE-T	4	15	1 ∅ 100	50	30min.	0.37	1200	1.25	0.125	0.95	0.095	6.0				
S7R15GE-TCE			1 ∅ 115										0.41	1500	1.0	0.100
			60										0.35	1550	1.0	0.100
S7R15GX-T	4	15	1 ∅ 220	50	30min.	0.17	1200	1.25	0.125	0.9	0.090	1.2				
S7R15GX-TCE			1 ∅ 240										0.18	1.45	0.145	1.1

- Please use appropriate capacitors according to the using voltage for S7R15GE-T type since the size of the capacitors differ to the different voltages and when not used properly, it may cause malfunction. Please inform required voltage when ordering or capacitor for 115V will be delivered.
- "CE" marked at the end of the model name indicates that it is thermally protected type which has received CE marking (File NO. E9766002E01, Certificate Institute: TÜV Rheinland) S7R15GE-TCE is available only for 115V specification.
- "TP" marked at the end of the model name indicates that it is standard motor with Thermal Protector mounted. S7R15GE-T, S7R15GX-T is thermally protected type with TP mounted.
- Above data is measured with friction brake mounted.
- There is no marked the 'L' code for it is an exclusive use.

TERMINAL BOX TYPE MOTORS



50Hz

GEAR RATIO		3	3.6	5	6	7.5	9	10	12.5	15	18	20	25	30	36	40	50	60	75	90	100	120	150	180	200
MODEL	rpm	500	416	300	250	200	166	150	120	100	83	75	60	50	41	37	30	25	20	16	15	12	10	8	7.5
	kg·cm	3.2	3.9	5.4	6.5	8.1	9.7	10.8	13.5	16.2	19.4	19.4	24.2	29.1	34.9	38.8	43.6	50.0	50.0	50.0	50.0	50.0	50.0	50.0	50.0
S7KA□B	N·m	0.314	0.382	0.530	0.637	0.794	0.951	1.059	1.324	1.587	1.902	1.902	2.373	2.854	3.423	3.805	4.276	4.900	4.900	4.900	4.900	4.900	4.900	4.900	4.900

60Hz

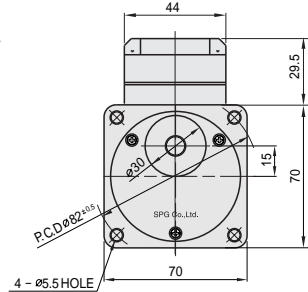
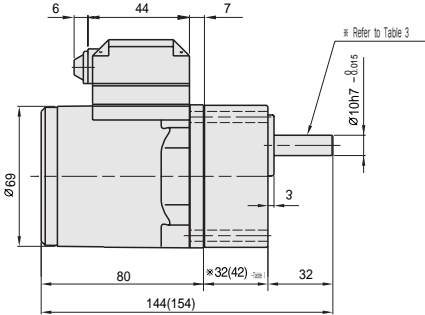
GEAR RATIO		3	3.6	5	6	7.5	9	10	12.5	15	18	20	25	30	36	40	50	60	75	90	100	120	150	180	200
MODEL	rpm	600	500	360	300	240	200	180	144	120	100	90	72	60	50	45	36	30	24	20	18	15	12	10	9
	kg·cm	3.0	3.6	5.1	6.1	7.6	9.1	10.1	12.7	15.2	18.2	18.2	22.8	27.3	32.8	36.5	41.0	49.2	50.0	50.0	50.0	50.0	50.0	50.0	50.0
S7KA□B	N·m	0.294	0.353	0.500	0.598	0.745	0.892	0.990	1.245	1.491	1.785	1.785	2.236	2.677	3.217	3.579	4.021	4.825	4.900	4.900	4.900	4.900	4.900	4.900	4.900

- The code in □ of gearhead model is for gear ratio.
- It is the permissible torque of the assembled motor and gearhead.
- The permissible torque of the assembled with motor and inter-decimal gearhead is 50kg·cm.
- ■ color indicates that the output shaft of the geared motor rotates in the same direction as the output shaft of the motor. Others indicate rotation in the opposite direction.
- Rotational speed based on synchronous speed (50Hz:1500rpm, 60Hz:1800rpm) divided by gear ratio. The actual rotation speed is less 2-20% than the displayed value according to the load.
- There is no marked the 'L' code for it is an exclusive use.

DIMENSIONS

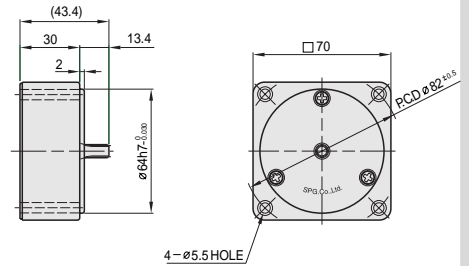
GEARED MOTOR

※ MOTOR MODEL : S7(I,R)15G□-T
 ※ HEAD MODEL : S7□A3□~S7□A200□



INTER-DECIMAL GEARHEAD

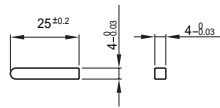
※ MODEL : S7GX10B



※ 32(42)-(Table 1)

GEAR RATIO	SIZE(mm)
S7□A3□~S7□A18□	32
S7□A20□~S7□A200□	42

KEY SPEC



WEIGHT-(Table 2)

PART	WEIGHT(kg)	
INDUCTION MOTOR	1.10	
DECIMAL GEARHEAD	1.11	
GEAR HEAD	S7□A3□~S7□A18□	0.38
	S7□A20□~S7□A40□	0.47
	S7□A50□~S7□A250□	0.52

SPEC for output shaft of gearhead-(Table 3)

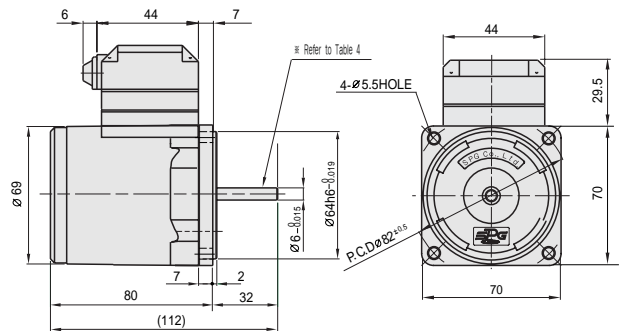
SPEC for output shaft of motor-(Table 4)

MODEL	TYPES OF OUTPUT SHAFT
STRAIGHT TYPE	
S7SA3□~S7SA200□	
D-CUT TYPE	
S7DA3□~S7DA200□	
KEY TYPE	
S7KA3□~S7KA200□	

MODEL	TYPES OF OUTPUT SHAFT
GEAR TYPE	
S7(I,R)15G□-T	
STRAIGHT TYPE	
S7(I,R)15S□-T	
D-CUT TYPE	
S7(I,R)15D□-T	

MOTOR

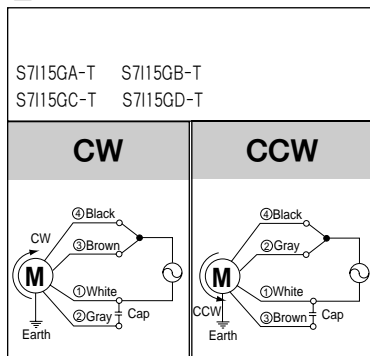
※ MOTOR MODEL : S7(I,R)15□□-T



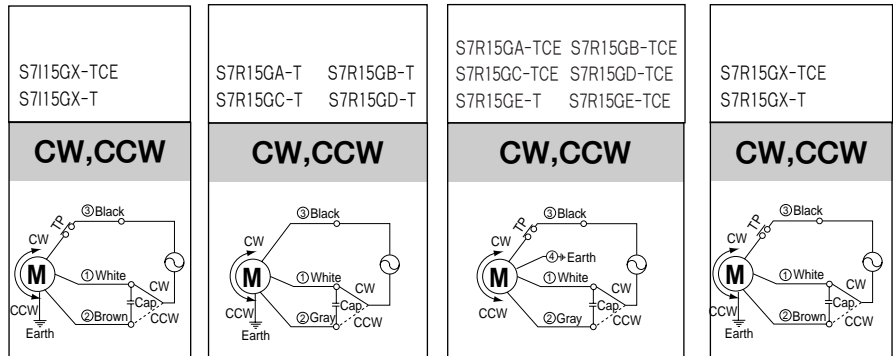
SCHEMATIC DIAGRAMS

The direction of motor rotation is as viewed from the front shaft end of the motor.
 Circled number is the terminal number inside terminal box.

INDUCTION MOTOR



REVERSIBLE MOTOR



Change the direction of motor rotation only after the motor stops completely. If an attempt is made to change the direction of rotation while the motor is running, the motor may ignore the reversing command or change its direction of rotation after some delay. ①, ②, ③, ④: Terminal NO.