



15W

REVERSIBLE MOTOR
 80mm LEAD WIRE TYPE

SIZE mm sq.	Type	Poles	Output (W)	Voltage (V)	Frequency (Hz)	Duty	Rated Load				Starting Torque		Capacitor (uF)
							Current (A)	Speed (rpm)	Torque (kg-cm) (N-m)		(kg-cm)	(N-m)	
80	S8R15GA S8R15GA(TP) S8R15GACE	4	15	1 ∅ 110	60	30min.	0.49	1550	1.00	0.100	1.20	0.120	6.0
	S8R15GB S8R15GB(TP) S8R15GBCE	4	15	1 ∅ 220	60	30min.	0.25	1550	1.00	0.100	1.20	0.120	1.5
	S8R15GC S8R15GC(TP) S8R15GCCE	4	15	1 ∅ 100	50 60	30min.	0.58 0.48	1200 1500	1.30 1.10	0.130 0.110	0.95	0.095	6.0
	S8R15GD S8R15GD(TP) S8R15GDCE	4	15	1 ∅ 200	50 60	30min.	0.29 0.25	1200 1500	1.30 1.10	0.130 0.110	0.95	0.095	1.5
	S8R15GE S8R15GECE	4	15	1 ∅ 100	50 60	30min.	0.59 0.48	1250 1550	1.30 1.20	0.130 0.120	0.95	0.095	6.0 4.5
	S8R15GX S8R15GXCE	4	15	1 ∅ 220 1 ∅ 240	50	30min.	0.16 0.18	1200	1.30 1.40	0.130 0.140	1.10 1.30	0.110 0.130	1.2

- S8R15GE is UL approved (UL FILE No. E172720) thermally protected type.
- Please use appropriate capacitors according to the using voltage for S8R15GE type since the size of the capacitors differ to the different voltages and when not used properly, it may cause malfunction. Please inform required voltage when ordering or capacitor for 115V will be delivered.
- "CE" marked at the end of model name indicates that it is thermally protected type which has received CE (File NO. E9766002E01, Certificate Institute: TÜV Rhinland) with built-in TP S8R15GECE is available only for 115V specification.
- "TP" marked at the end of the model name indicates that it is standard motor with Thermal Protector mounted. S8R15GE, S8R15GX is thermally protected type with TP mounted.
- Data is measured with friction brake mounted.
- There is no marked the 'L' code for it is an exclusive use.

50Hz

MODEL	GEAR RATIO	Gear Ratios																							
		3	3.6	5	6	7.5	9	10	12.5	15	18	20	25	30	36	40	50	60	75	90	100	120	150	180	200
S8KA <input type="checkbox"/> B	rpm	500	416	300	250	200	166	150	120	100	83	75	60	50	41	37	30	25	20	16	15	12	10	8	7.5
	kg-cm	3.4	4.1	5.7	6.8	8.5	10.2	11.3	14.2	17.0	20.4	20.4	25.6	30.7	36.8	40.9	46.2	55.4	69.2	80	80	80	80	80	80
	N·m	0.333	0.402	0.559	0.666	0.833	1.000	1.107	1.392	1.666	1.999	1.999	2.509	3.009	3.606	4.008	4.530	5.433	6.786	7.840	7.840	7.840	7.840	7.840	7.840

60Hz

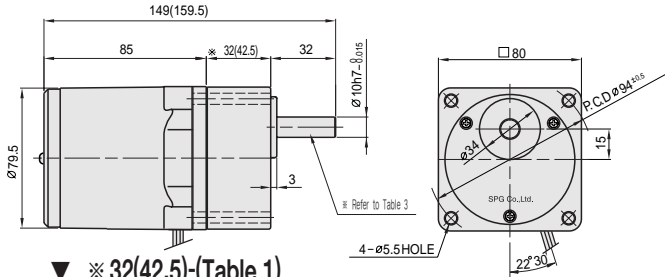
MODEL	GEAR RATIO	Gear Ratios																							
		3	3.6	5	6	7.5	9	10	12.5	15	18	20	25	30	36	40	50	60	75	90	100	120	150	180	200
S8KA <input type="checkbox"/> B	rpm	600	500	360	300	240	200	180	144	120	100	90	72	60	50	45	36	30	24	20	18	15	12	10	9
	kg-cm	2.9	3.5	4.9	5.8	7.3	8.7	9.7	12.2	14.6	17.5	17.5	21.9	26.3	31.5	35.0	39.6	47.5	59.4	71.3	79.2	80	80	80	80
	N·m	0.284	0.343	0.481	0.568	0.715	0.853	0.951	1.196	1.432	1.715	1.715	2.146	2.577	3.087	3.430	3.883	4.658	5.825	6.992	7.767	7.840	7.840	7.840	7.840

- The code in of gearhead model is for gear ratio.
- It is the permissible torque of the assembled motor and gearhead.
- The permissible torque of the assembled with motor and inter-decimal gearhead is 80kg · cm.
- ■ color indicates that the output shaft of the geared motor rotates in the same direction as the output shaft of the motor. Others indicate rotation in the opposite direction.
- Rotational speed based on synchronous speed (50Hz:1500rpm, 60Hz:1800rpm) divided by gear ratio. The actual rotation speed is less 2-20% than the displayed value according to the load.
- There is no marked the 'L' code for it is an exclusive use.

DIMENSIONS

▼ GEARED MOTOR

※ MOTOR MODEL : S8R15G□
 ※ HEAD MODEL : S8□A3□~S8□A200□



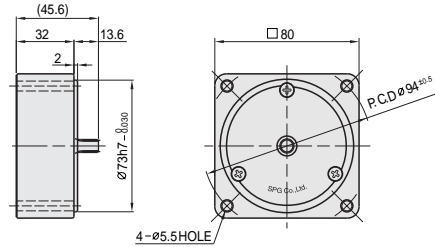
▼ ※ 32(42.5)-(Table 1)

GEAR RATIO	SIZE(mm)
S8□A3□~S8□A18□	32
S8□A20□~S8□A200□	42.5

WEIGHT-(Table 2) ▶

▼ INTER-DECIMAL GEARHEAD

※ MODEL : S8GX10B



PART	WEIGHT(Kg)	
MOTOR	1.46	
DECIMAL GEARHEAD	0.43	
GEAR HEAD	S8□A3□ ~S8□A18□	0.43
	S8□A20□ ~S8□A40□	0.57
	S8□A50□ ~S8□A200□	0.61

▼ SPEC for output shaft of gearhead-(Table 3)

MODEL	TYPES OF OUTPUT SHAFT
STRAIGHT TYPE	
S8SA3□ ~S8SA200□	
D-CUT TYPE	
S8DA3□ ~S8DA200□	
KEY TYPE	
S8KA3□ ~S8KA200□	

▼ SPEC for output shaft of motor-(Table 4)

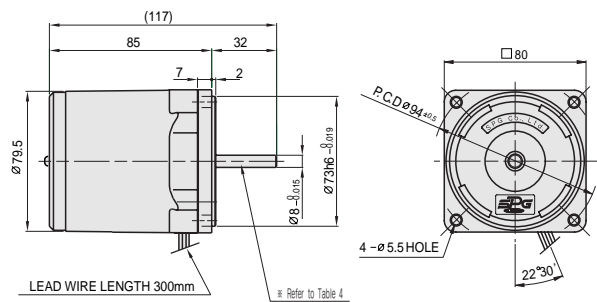
MODEL	TYPES OF OUTPUT SHAFT
GEAR TYPE	
S8R15G□	
STRAIGHT TYPE	
S8R15S□	
D-CUT TYPE	
S8R15D□	
KEY TYPE	
S6R15K□	

▼ KEY SPEC

GEARHEAD	MOTOR

▼ MOTOR

※ MOTOR MODEL : S8R15□□



SCHEMATIC DIAGRAMS

The direction of motor rotation is as viewed from the front shaft end of the motor.

S8R15GA S8R15GB S8R15GC S8R15GD	S8R15GA(TP) S8R15GB(TP) S8R15GC(TP) S8R15GD(TP) S8R15GACE S8R15GBCE S8R15GE S8R15GCCCE S8R15GDCE S8R15GECE	S8R15GX S8R15GXCE
CW,CCW	CW,CCW	CW,CCW