

60W

INDUCTION MOTOR
 90mm LEAD WIRE TYPE

SIZE mm sq.	Type	Poles	Output (W)	Voltage (V)	Frequency (Hz)	Duty	Rated Load				Starting Torque		Capacitor (uF)
							Current (A)	Speed (rpm)	Torque (kg-cm) (N-m)		(kg-cm)	(N-m)	
90	S9I60GA() S9I60GA()(TP) S9I60GA()CE	4	60	1 Ø 110	60	Cont.	1.35	1600	3.80	0.380	4.80	0.480	15.0
	S9I60GB() S9I60GB()(TP) S9I60GB()CE	4	60	1 Ø 220	60	Cont.	0.68	1600	3.90	0.390	4.80	0.480	4.0
	S9I60GC() S9I60GC()(TP) S9I60GC()CE	4	60	1 Ø 100	50	Cont.	1.26	1300	4.60	0.460	3.40	0.340	15.0
	60				1.37		1550	3.90	0.390				
	S9I60GD() S9I60GD()(TP) S9I60GD()CE	4	60	1 Ø 200	50	Cont.	0.65	1300	4.70	0.470	3.85	0.385	4.0
	60				0.70		1550	4.00	0.400				
	S9I60GE() S9I60GE()CE	4	60	1 Ø 100	50	Cont.	1.10	1300	4.60	0.460	3.20	0.320	15.0
	60				1.20		1550	3.90	0.390				
	60				1.20		1550	4.00	0.400	12.0			
	S9I60GX() S9I60GX()CE	4	60	1 Ø 220 1 Ø 240	50	Cont.	0.47	1300	4.60	0.460	3.20	0.320	3.5
	60				0.50		4.90		0.490	3.90	0.390		
	60				0.60		4.60		0.460	9.30	0.930		
	S9I60GU() S9I60GU()CE	4	60	3 Ø 200	50	Cont.	0.60	1300	4.60	0.460	9.30	0.930	—
	60				0.50		1550	3.90	0.390	8.00	0.800		
	S9I60GT() S9I60GT()CE	4	60	3 Ø 220	50	Cont.	0.80	1350	4.40	0.440	11.35	1.135	—
	60				0.57		1600	3.90	0.390	9.30	0.930		
	S9I60GS() S9I60GS()CE	4	60	3 Ø 380 3 Ø 400 3 Ø 415 3 Ø 440	50	Cont.	0.27	1300	4.60	0.460	8.25	0.825	—
					60		0.24	1550	3.90	0.390	6.50	0.650	
50					Cont.	0.29	1300	4.70	0.470	9.30	0.930		
60						0.25	1550	4.00	0.400	7.35	0.735		
50					Cont.	0.27	1350	4.60	0.460	9.95	0.995		
60						0.23	1600	3.80	0.380	7.50	0.750		
50	Cont.	0.31	1350	4.70	0.470	10.75	1.075						
60		0.25	1600	3.90	0.390	8.40	0.840						

- S9I60GE is UL approved (UL FILE No. E172720) thermally protected type.
- Please use appropriate capacitors according to the using voltage for S9I60GE type since the size of the capacitors differ to the different voltages and when not used properly, it may cause malfunction. Please inform required voltage when ordering or capacitor for 115V will be delivered.
- "CE" marked at the end of model name indicates that it is thermally protected type which has received CE (File NO. E9766002E01, Certificate Institute: TÜV Rheinland) with built-in TP S9I60GE()CE is available only for 115V specification.
- "TP" marked at the end of the model name indicates that it is standard motor with Thermal Protector mounted. S9I60GE, S9I60GX, S9I60GS is thermally protected type with TP mounted.
- In case 3 phase 380V motor is controlled with inverter, please be careful to use considerin
- () is for marking 'L' type or 'H'. 'L' should be used with gearhead 'L' and 'H' should be used with gearhead 'H'.

50Hz

GEAR RATIO	3 3.6 5 6 7.5 9 10 12.5 15 18 20 25 30 36 40 50 60 75 90 100 120 150 180 200																										
	MODEL	rpm	500	416	300	250	200	166	150	120	100	83	75	60	50	41	37	30	25	20	16	15	12	10	8	7.5	
S9KC□B()	kg-cm	12.2	14.6	20.3	24.3	30.4	36.5	40.5	45.6	54.8	65.7	73.0	82.5	99.0	119	132	165	198	200	200	200	200	200	200	200	200	200
S9KC□B()-S	N-m	1.196	1.431	1.989	2.381	2.989	3.577	3.969	4.469	5.370	6.439	7.154	8.085	9.702	11.66	12.94	16.17	19.40	19.60	19.60	19.60	19.60	19.60	19.60	19.60	19.60	19.60

60Hz

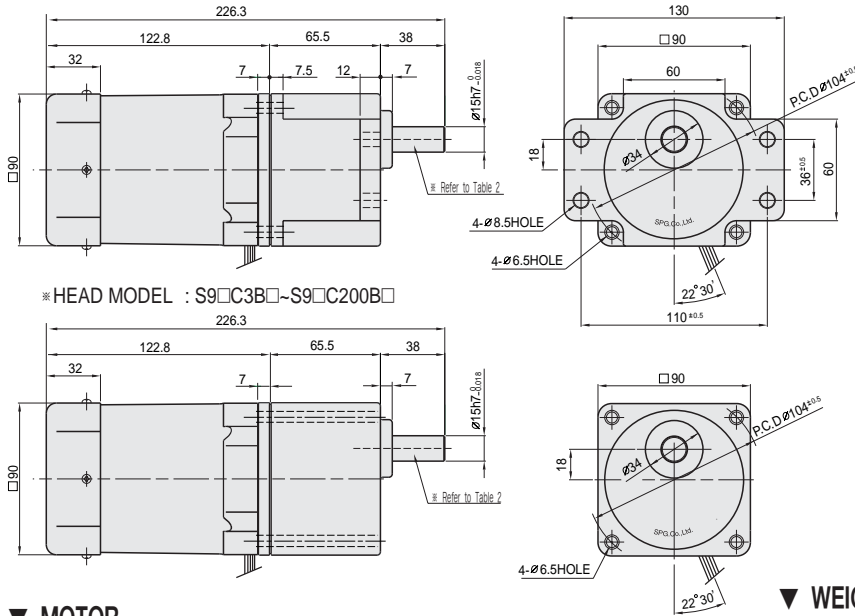
GEAR RATIO	3 3.6 5 6 7.5 9 10 12.5 15 18 20 25 30 36 40 50 60 75 90 100 120 150 180 200																									
	MODEL	rpm	600	500	360	300	240	200	180	144	120	100	90	72	60	50	45	36	30	24	20	18	15	12	10	9
S9KC□B()	kg-cm	9.72	11.7	16.2	19.4	24.3	29.2	32.4	36.5	43.8	52.6	58.4	66.0	79.2	95.0	106	132	158	177	200	200	200	200	200	200	200
S9KC□B()-S	N-m	0.953	1.147	1.588	1.901	2.381	2.862	3.175	3.577	4.292	5.155	5.723	6.468	7.762	9.310	10.39	12.94	15.48	17.35	19.60	19.60	19.60	19.60	19.60	19.60	19.60

- The code in □ of gearhead model is for gear ratio.
- It is the permissible torque of the assembled motor and gearhead.
- The permissible torque of the assembled with motor and inter-decimal gearhead is 200kg·cm.
- ■ color indicates that the output shaft of the geared motor rotates in the same direction as the output shaft of the motor. Others indicate rotation in the opposite direction.
- Rotational speed based on synchronous speed (50Hz:1500rpm, 60Hz:1800rpm) divided by gear ratio. The actual rotation speed is less 2-20% than the displayed value according to the load.
- () is for marking 'L' type or 'H'. 'L' should be used with motor 'L' and 'H' should be used with motor 'H'.

DIMENSIONS

▼ GEARED MOTOR

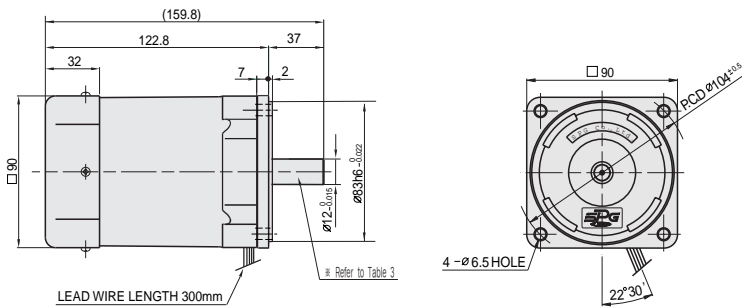
- * MOTOR MODEL : S9I60G□□
- * HEAD MODEL : S9□C3B□-S~S9□C200B□-S



- * HEAD MODEL : S9□C3B□~S9□C200B□

▼ MOTOR

- * MOTOR MODEL : S9I60□□□



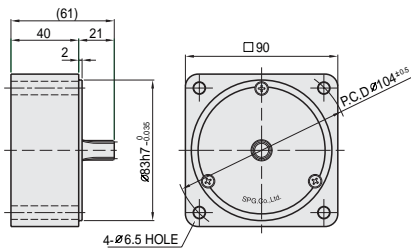
LEAD WIRE LENGTH 300mm

▼ WEIGHT-(Table 1)

PART	WEIGHT(Kg)	
MOTOR	2.44	
DECIMAL GEAR HEAD	0.65	
GEAR HEAD	S9□C3B□ ~S9□C10B□	1.21
	S9□C12.5B□ ~S9□C20B□	1.30
	S9□C25B□ ~S9□C60B□	1.40
	S9□C75B□ ~S9□C200B□	1.45

▼ INTER-DECIMAL GEARHEAD

- * MODEL : S9GX10B(H,L)-S



▼ KEY SPEC

GEARHEAD	MOTOR

▼ SPEC for output shaft of gearhead-(Table 2)

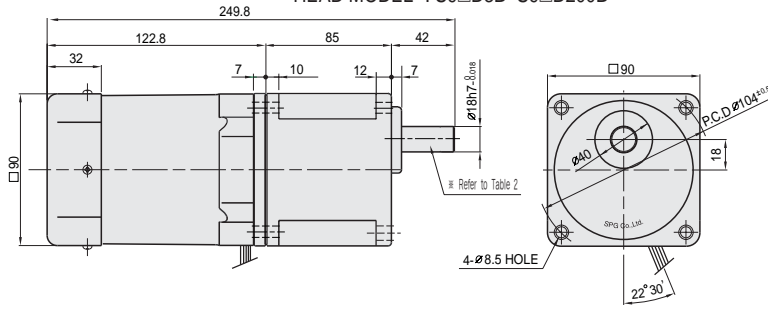
MODEL	TYPES OF OUTPUT SHAFT
STRAIGHT TYPE	
S9SC3B□ ~S9SC200B□	
D-CUT TYPE	
S9DC3B□ ~S9DC200B□	
KEY TYPE	
S9KC3B□ ~S9KC200B□	

▼ SPEC for output shaft of motor-(Table 3)

MODEL	TYPES OF OUTPUT SHAFT
GEAR TYPE	
S9I60G□□	
STRAIGHT TYPE	
S9I60S□	
D-CUT TYPE	
S9I60D□	
KEY TYPE	
S9I60K□	

DIMENSIONS

▼ GEARED MOTOR * MOTOR MODEL : S9I60G□H
* HEAD MODEL : S9□D3B~S9□D200B

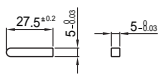


▼ WEIGHT-(Table 1)

PART	WEIGHT(Kg)	
MOTOR	2.44	
GEAR HEAD	S9□D3B ~S9□D10B	1.65
	S9□D12.5B ~S9□D20B	1.80
	S9□D25B ~S9□D60B	1.90
	S9□D75B ~S9□D200B	1.95

▼ SPEC for output shaft of gearhead-(Table 2)

▼ KEY SPEC



MODEL	TYPES OF OUTPUT SHAFT	MODEL	TYPES OF OUTPUT SHAFT	MODEL	TYPES OF OUTPUT SHAFT
STRAIGHT TYPE		DCUT TYPE		KEY TYPE	
S9SD3B ~S9SD200B		S9DD3B ~S9DD200B		S9KD3B ~S9KD200B	

50Hz

MODEL	GEAR RATIO	rpm																						
		3	3.6	5	6	7.5	9	10	12.5	15	18	20	25	30	36	40	50	60	75	90	100	120	150	180
S9KD□B	kg·cm	12.2	14.6	20.3	24.3	30.4	36.5	40.5	45.6	54.8	65.7	73.0	82.5	99.0	119	132	165	198	221	266	295	300	300	300
	N·m	1.196	1.431	1.989	2.381	2.989	3.577	3.969	4.469	5.370	6.439	7.154	8.085	9.702	11.66	12.94	16.17	19.40	21.67	26.09	28.93	29.42	29.42	29.42

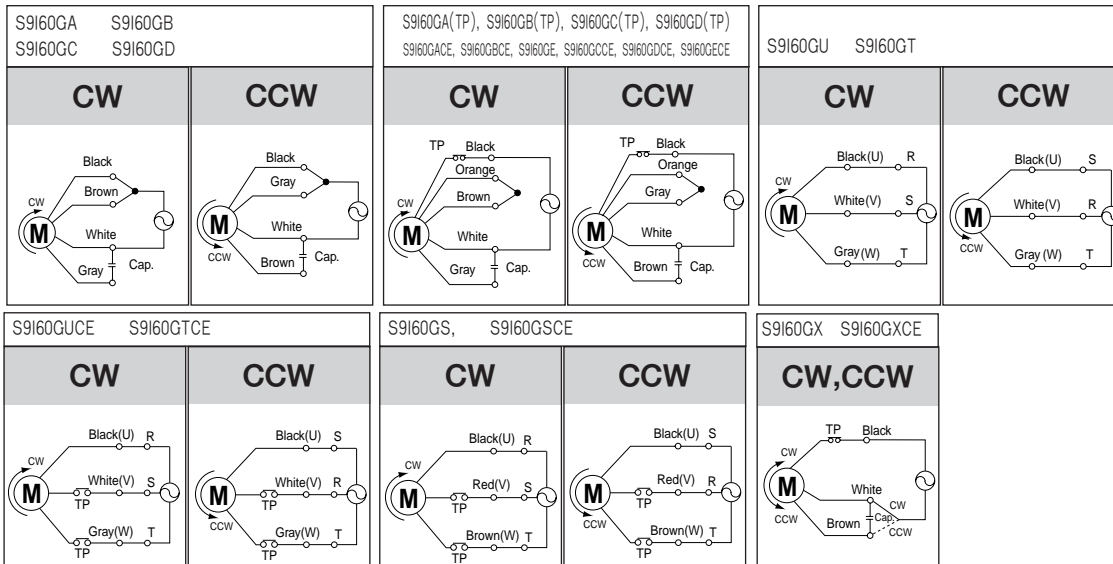
60Hz

MODEL	GEAR RATIO	rpm																						
		3	3.6	5	6	7.5	9	10	12.5	15	18	20	25	30	36	40	50	60	75	90	100	120	150	180
S9KD□B	kg·cm	9.72	11.7	16.2	19.4	24.3	29.2	32.4	36.5	43.8	52.6	58.4	66.0	79.2	95.0	106	132	158	177	212	236	283	300	300
	N·m	0.953	1.147	1.588	1.901	2.381	2.862	3.175	3.577	4.292	5.155	5.723	6.468	7.762	9.310	10.39	12.94	15.48	17.35	20.79	23.14	27.75	29.42	29.42

- The code in □ of gearhead model is for gear ratio.
- It is the permissible torque of the assembled motor and gearhead.
- The permissible torque of the assembled with motor and inter-decimal gearhead is 300kg·cm.
- ■ color indicates that the output shaft of the geared motor rotates in the same direction as the output shaft of the motor. Others indicate rotation in the opposite direction.
- Rotational speed based on synchronous speed (50Hz:1500rpm, 60Hz:1800rpm) divided by gear ratio. The actual rotation speed is less 2-20% than the displayed value according to the load.
- There is not marked the 'H' type caused by exclusive use. Please use 'H' type motor.

SCHEMATIC DIAGRAMS

The direction of motor rotation is as viewed from the front shaft end of the motor.



Change the direction of motor rotation only after the motor stops completely. If an attempt is made to change the direction of rotation while the motor is running, the motor may ignore the reversing command or change its direction of rotation after some delay.