



25W

ELECTROMAGNETIC BRAKE MOTOR
 80mm LEAD WIRE TYPE

| SIZE mm sq. | Type | Poles | Output (W) | Voltage (V) | Frequency (Hz) | Duty | Rated Load | | | | Starting Torque | | Capacitor (uF) |
|----------------|---|-------|---------------|--------------------|-------------------|--------|----------------------|----------------------|-------------------------|-------------------------|-----------------|-------|-------------------|
| | | | | | | | Current (A) | Speed (rpm) | Torque (kg-cm) (N-m) | | (kg-cm) | (N-m) | |
| 80 | S8R25GA-E S8R25GA-E(TP) S8R25GA-ECE | 4 | 25 | 1 ∅ 110 | 60 | 30min. | 0.73 | 1550 | 1.62 | 0.162 | 2.40 | 0.240 | 10.0 |
| | S8R25GB-E S8R25GB-E(TP) S8R25GB-ECE | 4 | 25 | 1 ∅ 220 | 60 | 30min. | 0.36 | 1550 | 1.62 | 0.162 | 2.40 | 0.240 | 2.5 |
| | S8R25GC-E S8R25GC-E(TP) S8R25GC-ECE | 4 | 25 | 1 ∅ 100 | 50 60 | 30min. | 0.60 0.70 | 1250 1500 | 2.00 1.70 | 0.200 0.170 | 2.20 | 0.220 | 10.0 |
| | S8R25GD-E S8R25GD-E(TP) S8R25GD-ECE | 4 | 25 | 1 ∅ 200 | 50 60 | 30min. | 0.30 0.35 | 1250 1500 | 2.00 1.70 | 0.200 0.170 | 2.00 | 0.200 | 2.5 |
| | S8R25GE-E S8R25GE-ECE | 4 | 25 | 1 ∅ 100 1 ∅ 115 | 50 60 60 | 30min. | 0.58 0.54 0.52 | 1250 1550 1600 | 2.00 1.70 1.65 | 0.200 0.170 0.165 | 1.90 | 0.190 | 7.0 |
| | S8R25GX-E S8R25GX-ECE | 4 | 25 | 1 ∅ 220 1 ∅ 240 | 50 | 30min. | 0.25 0.27 | 1250 | 2.00 2.10 | 0.200 0.210 | 2.10 | 0.210 | 2.0 |
| | S8I25GU-E S8I25GU-ECE | 4 | 25 | 3 ∅ 200 | 50 60 | Cont. | 0.26 0.24 | 1300 1550 | 1.95 1.65 | 0.195 0.165 | 3.50 | 0.350 | — |
| | S8I25GT-E S8I25GT-ECE | 4 | 25 | 3 ∅ 220 | 50 60 | Cont. | 0.28 0.24 | 1350 1600 | 1.90 1.60 | 0.190 0.160 | 4.20 | 0.420 | — |
| | S8I25GS-E S8I25GS-ECE | 4 | 25 | 3 ∅ 380 | 50 | Cont. | 0.14 | 1250 | 2.00 | 0.200 | 3.15 | 0.315 | — |
| | | | | | 60 | Cont. | 0.12 | 1500 | 1.70 | 0.170 | 2.50 | 0.250 | |
| | | | | | 50 | | 0.14 | 1250 | 2.10 | 0.210 | 3.50 | 0.350 | |
| | | | | | 60 | Cont. | 0.12 | 1500 | 1.80 | 0.180 | 2.75 | 0.275 | |
| | | | | | 50 | | 0.15 | 1300 | 1.95 | 0.195 | 3.75 | 0.375 | |
| | | | | | 60 | Cont. | 0.13 | 1550 | 1.65 | 0.165 | 3.00 | 0.300 | |
| | | | | | 50 | | 0.15 | 1300 | 2.10 | 0.210 | 4.40 | 0.440 | |
| | | | | | 60 | Cont. | 0.13 | 1600 | 1.60 | 0.160 | 3.40 | 0.340 | |

- S8R25GE-E is UL approved(UL FILE NO. E172720) thermally protected type.
- Please use appropriate capacitors according to the using voltage for S8R25GE-E type since the size of the capacitors differ to the different voltages and when not used properly, it may cause malfunction. Please inform required voltage when ordering or capacitor for 115V will be delivered.
- "CE" marked at the end of model name indicates that it is thermally protected type which has received CE (File NO. E9766002E01, Certificate Institute: TÜV Rheinland)S8R25GE-ECE is available only for 115V specification.
- "TP" marked at the end of the model name indicates that it is standard motor with Thermal Protector mounted. S8R25GE-E, S8R25GX-E is thermally protected type with TP mounted.
- Above data is measured with brake removed from electromagnetic brake motor.
- In case 3 phase 380V motor is controlled with inverter, please be careful to use considerin
- There is no marked the 'L' code for it is an exclusive use.

50Hz

| MODEL | GEAR RATIO | 3 | 3.6 | 5 | 6 | 7.5 | 9 | 10 | 12.5 | 15 | 18 | 20 | 25 | 30 | 36 | 40 | 50 | 60 | 75 | 90 | 100 | 120 | 150 | 180 | 200 |
|--------|------------|-------|-------|-------|-------|-------|-------|-------|-------|-------|-------|-------|-------|-------|-------|-------|-------|-------|-------|-------|-------|-------|-------|-------|-------|
| | rpm | 500 | 416 | 300 | 250 | 200 | 166 | 150 | 120 | 100 | 83 | 75 | 60 | 50 | 41 | 37 | 30 | 25 | 20 | 16 | 15 | 12 | 10 | 8 | 7.5 |
| S8KA□B | kg-cm | 5.3 | 6.4 | 8.9 | 10.7 | 13.4 | 16.0 | 17.8 | 22.3 | 26.7 | 32.1 | 32.1 | 40.2 | 48.2 | 57.8 | 64.2 | 72.6 | 80.0 | 80.0 | 80.0 | 80.0 | 80.0 | 80.0 | 80.0 | 80.0 |
| | Nm | 0.519 | 0.627 | 0.872 | 1.049 | 1.313 | 1.568 | 1.744 | 2.185 | 2.617 | 3.146 | 3.146 | 3.940 | 4.724 | 5.664 | 6.292 | 7.115 | 7.840 | 7.840 | 7.840 | 7.840 | 7.840 | 7.840 | 7.840 | 7.840 |

60Hz

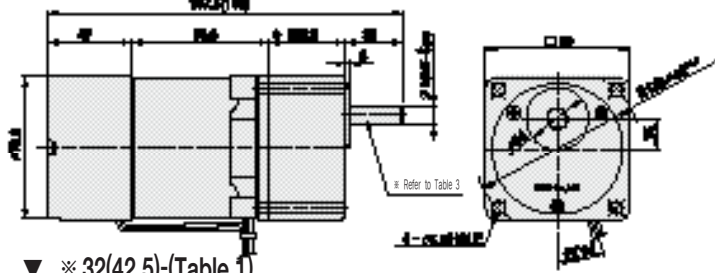
| MODEL | GEAR RATIO | 3 | 3.6 | 5 | 6 | 7.5 | 9 | 10 | 12.5 | 15 | 18 | 20 | 25 | 30 | 36 | 40 | 50 | 60 | 75 | 90 | 100 | 120 | 150 | 180 | 200 |
|--------|------------|-------|-------|-------|-------|-------|-------|-------|-------|-------|-------|-------|-------|-------|-------|-------|-------|-------|-------|-------|-------|-------|-------|-------|-------|
| | rpm | 600 | 500 | 360 | 300 | 240 | 200 | 180 | 144 | 120 | 100 | 90 | 72 | 60 | 50 | 45 | 36 | 30 | 24 | 20 | 18 | 15 | 12 | 10 | 9 |
| S8KA□B | kg-cm | 4.4 | 5.2 | 7.3 | 8.7 | 10.9 | 13.1 | 14.6 | 18.2 | 21.9 | 26.2 | 26.3 | 32.9 | 39.4 | 47.3 | 52.6 | 59.4 | 71.3 | 80.0 | 80.0 | 80.0 | 80.0 | 80.0 | 80.0 | 80.0 |
| | Nm | 0.431 | 0.510 | 0.715 | 0.853 | 1.068 | 1.284 | 1.431 | 1.784 | 2.146 | 2.568 | 2.577 | 3.224 | 3.861 | 4.635 | 5.155 | 5.821 | 6.987 | 7.840 | 7.840 | 7.840 | 7.840 | 7.840 | 7.840 | 7.840 |

- The code in □ of gearhead model is for gear ratio.
- It is the permissible torque of the assembled motor and gearhead.
- The permissible torque of the assembled with motor and inter-decimal gearhead is 80kg · cm.
- ■ color indicates that the output shaft of the geared motor rotates in the same direction as the output shaft of the motor. Others indicate rotation in the opposite direction.
- Rotational speed based on synchronous speed (50Hz:1500rpm, 60Hz:1800rpm) divided by gear ratio. The actual rotation speed is less 2-20% than the displayed value according to the load.
- There is no marked the 'L' code for it is an exclusive use.

DIMENSIONS

▼ GEARED MOTOR

※ MOTOR MODEL : S8R25G□-E
 ※ HEAD MODEL : S8□A3□~S8□A200□



▼ ※ 32(42.5)-(Table 1)

| GEAR RATIO | SIZE(mm) |
|------------------|----------|
| S8□A3□~S8□A18□ | 32 |
| S8□A20□~S8□A200□ | 42.5 |

▼ SPEC for output shaft of gearhead-(Table 3)

| MODEL | TYPES OF OUTPUT SHAFT |
|---------------------|-----------------------|
| STRAIGHT TYPE | |
| S8SA3□ ~S8SA200□ | |
| D-CUT TYPE | |
| S8DA3□ ~S8DA200□ | |
| KEY TYPE | |
| S8KA3□ ~S8KA200□ | |

▼ SPEC for output shaft of motor-(Table 4)

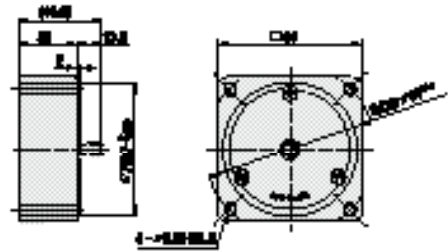
| MODEL | TYPES OF OUTPUT SHAFT |
|---------------|-----------------------|
| GEAR TYPE | |
| S8R25G□-E | |
| STRAIGHT TYPE | |
| S8R25S□-E | |
| D-CUT TYPE | |
| S8R25D□-E | |
| KEY TYPE | |
| S8R25K□-E | |

▼ KEY SPEC

| GEARHEAD | MOTOR |
|----------|-------|
| | |

▼ INTER-DECIMAL GEARHEAD

※ MODEL : S8GX10B

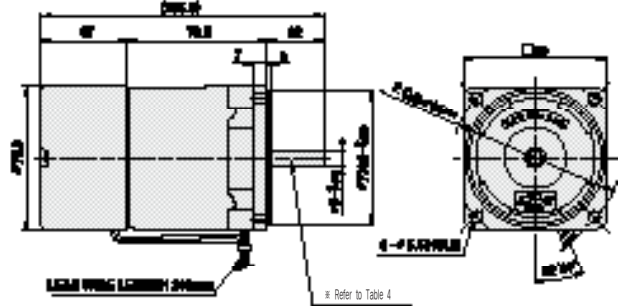


▼ WEIGHT-(Table 2)

| PART | WEIGHT(Kg) | |
|------------------|----------------------|------|
| MOTOR | 1.86 | |
| DECIMAL GEARHEAD | 0.43 | |
| GEAR HEAD | S8□A3□ ~S8□A18□ | 0.43 |
| | S8□A20□ ~S8□A40□ | 0.57 |
| | S8□A50□ ~S8□A200□ | 0.61 |

▼ MOTOR

※ MOTOR MODEL : S8R25□□-E



SCHEMATIC DIAGRAMS

The direction of motor rotation is as viewed from the front shaft end of the motor.

| | | | | | | |
|------------------------|--|------------------------|----------------------------|--------------------------|------------------------|------------|
| S8R25GA-E S8R25GC-E | S8R25GA-ECE S8R25GC-ECE S8R25GE-E S8R25GE-ECE | S8R25GB-E S8R25GD-E | S8R25GB-ECE S8R25GD-ECE | S8R25GX-E S8R25GX-ECE | S8I25GU-E S8I25GT-E | |
| CW,CCW | CW,CCW | CW,CCW | CW,CCW | CW,CCW | CW | CCW |
| | | | | | | |

| | | | |
|-------------|-------------|-----------|-------------|
| S8I25GU-ECE | S8I25GT-ECE | S8I25GS-E | S8I25GS-ECE |
| CW | CCW | CW | CCW |
| | | | |

R1 = 10~200 Ω (Min1/4W) C1 = 0.1~0.33μF (AC125WV or AC250WV)