

# STANDARD TYPE PERMANENT MAGNET DC MOTOR



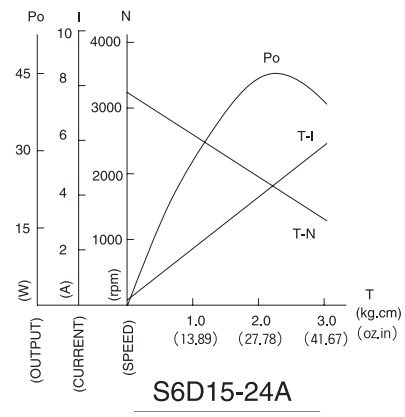
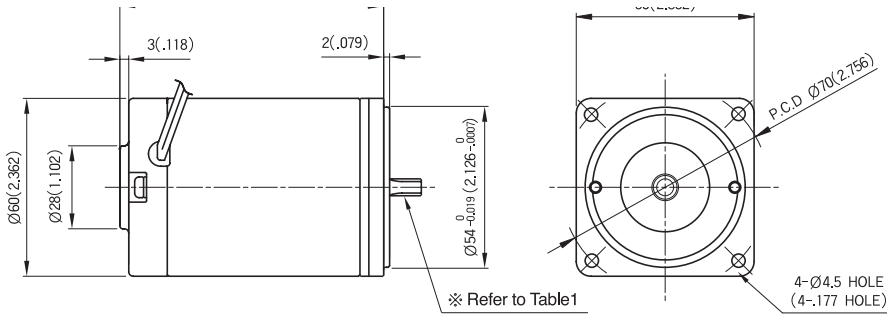
## S6D SERIES

### 15W

### MOTOR DIMENSION

unit : mm(inch)

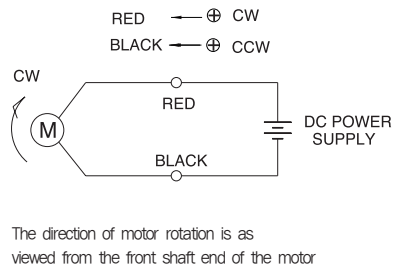
### CHARACTERISTIC CURVE



### SPEC for output shaft of motor-(Table 1)

### CIRCUIT DIAGRAM

MODEL	GEARED TYPE	STRAIGHT TYPE	D-CUT TYPE
	S6D15-□A	S6D15-□S	S6D15-□D
TYPE OF OUTPUT SHAFT			



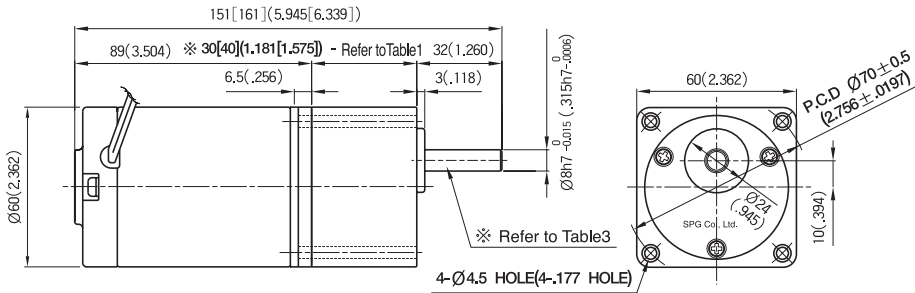
### MOTOR SPECIFICATION

Type	Voltage (V)	Output (W)	No Load		Rated Load			Run Duty (Hr)	Weight (kg(oz))	Remarks
			Revolution (RPM)	Current (A)	Revolution (RPM)	Torque (kg·cm(oz·in))	Current (A)			
S6D15-12□	12	15	3200	MAX.0.8	2950	0.5(6.94)	2.0	2000	0.9(31.7)	
S6D15-24□	24	15	3300	MAX.0.4	3000	0.5(6.94)	1.0	2000	0.9(31.7)	
S6D15-90□	90	15	3200	MAX.0.2	3000	0.5(6.94)	0.4	2000	0.9(31.7)	

## GEARED MOTOR SPECIFICATION unit : mm(inch)

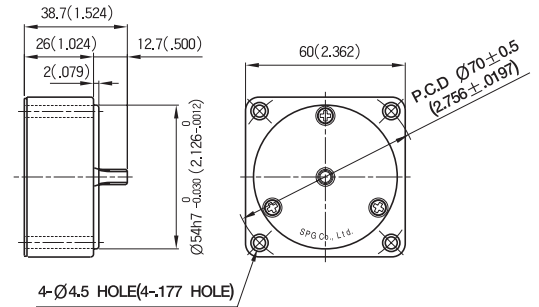
### ▼ GEARED MOTOR

- \* MOTOR MODEL : S6D15-□A
- \* HEAD MODEL : S6□A3□~S6□A250□



### ▼ INTER-DECIMAL GEAR HEAD

- \* MODEL : S6GX10B



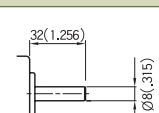
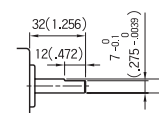
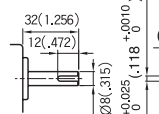
### ▼ \* 30[40](1.181[1.575])-(Table 1)

GEAR RATIO	SIZE :mm(inch)
S6 □ A3 □ ~S6 □ A18 □	30(1.181)
S6 □ A20 □ ~S6 □ A250 □	40(1.575)

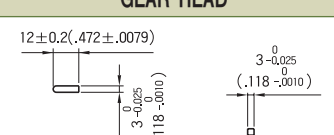
### ▼ WEIGHT-(Table 2)

PART	WEIGHT :kg(oz)	
MOTOR	0.9(31.7)	
DECIMAL GEAR HEAD	0.18(6.3)	
GEAR HEAD	S6 □ A3 □ ~S6 □ A18 □	0.24(8.5)
	S6 □ A20 □ ~S6 □ A40 □	0.30(10.6)
	S6 □ A50 □ ~S6 □ A250 □	0.33(11.6)

### ▼ SPEC for output shaft of gearhead-(Table 3)

MODEL	TYPE OF OUTPUT SHAFT
STRAIGHT TYPE	
S6SA3 □ ~S6SA250 □	
D-CUT TYPE	
S6DA3 □ ~S6DA250 □	
KEY TYPE	
S6KA3 □ ~S6KA250 □	

### ▼ KEY SPEC

GEAR HEAD


## GEAR HEAD RATED LOAD

### 1 S6D15-24A

MODEL	GEAR RATIO	3	3.6	5	6	7.5	9	10	12.5	15	18	20	25	30	36	40	50	60	75	90	100	120	150	180	200	250
		rpm	1100	917	660	550	440	367	330	264	220	183	165	132	110	92	83	66	55	44	37	33	28	22	18	17
S6DA□B	kg-cm	1.2	1.5	2.0	2.4	3.0	3.6	4.1	5.1	6.1	7.3	7.3	9.1	10.9	13.1	14.6	16.4	19.7	24.6	29.5	30.0	30.0	30.0	30.0	30.0	30.0
	N·m (oz·in)	0.119 (16.66)	0.143 (20.83)	0.198 (27.77)	0.238 (33.33)	0.298 (41.66)	0.357 (49.99)	0.397 (56.94)	0.496 (70.82)	0.595 (84.71)	0.714 (101.4)	0.714 (101.4)	0.893 (126.4)	1.072 (151.4)	1.286 (181.9)	1.429 (202.8)	1.607 (227.7)	1.929 (273.6)	2.411 (341.6)	2.893 (409.7)	2.940 (416.6)	2.940 (416.6)	2.940 (416.6)	2.940 (416.6)	2.940 (416.6)	2.940 (416.6)

- The code in □ of gearhead model is for gear ratio
- It is the permissible torque of the assembled motor and gearhead
- □ color indicates that the output shaft of the geared motor rotates in the same direction as the output shaft of the motor. Others indicate rotation in the opposite direction.
- Rotational speed based on no-load speed divided by gear ratio. The actual rotation speed is less 2-20% than the displayed value according to the load
- There is no marked the 'L' code for it is an exclusive use.